

## Daloc S88 Steel sliding door



The S88 sliding fire door is designed with fire resistance and personal safety in mind. The door consists of four main parts; door leaf, concealed rail system, counter weight closure and an audio/visual signaling. The door leaf is supplied in divided sections that are screwed together at assembly. The concealed rail system support and guide the door and, together with counter weight closing, securely closes when a fire alarm is triggered. As soon as the door leaf is set in motion, the audio/visual signaling is triggered as a warning.

Reference	Clear opening dimensions	Wall Opening dimensions	Weight
<b>Single door</b>			
S88 12 x 21	1200 x 2100	1200 x 2100	290
S88 21 x 24	2100 x 2400	2100 x 2400	470
S88 30 x 30	3000 x 3000	3000 x 3000	925
S88 36 x 40	3600 x 4000	3600 x 4000	1375
S88 54 x 48	5400 x 4800	5400 x 4800	2365

Other sizes available on request.

Fire rating, maximum dimensions:

EI<sub>2</sub>60/EW120, EI<sub>2</sub>60/EW120, EI<sub>2</sub>60/EW120 with built-in pass door and EI<sub>2</sub>90/EW120 5470x4890 mm.

EI<sub>2</sub>60/EW120, EI<sub>2</sub>90/EW120 with built-in pass door 2600x2681 mm.

EI<sub>2</sub>120 2630x2730 mm.

### CLASSIFICATIONS

The door type is tested by RISE Research Institutes of Sweden AB and certified by RISE. It is manufactured under the control of RISE.

**Fire rating:** EI<sub>2</sub>60/EW120 (replaces EI<sub>2</sub>60), EI<sub>2</sub>90/EW120, EI<sub>2</sub>120.

S88 can be fitted with a built-in pass door. Fire class up to EI<sub>2</sub>90/EW120.

**Corrosion class:** C2 according to EN ISO 12944-2

**Other:** CE-marked according to SS-EN 13241+A2:2016 and SS-EN 16034:2014 as well as corresponding with 305/2011/EC Construction Products Regulation (CPR) and 2006/42/EC Machinery Directive.

The CE decal at the rear edge of the door leaf reports the following properties:

Fire resistance: EI<sub>2</sub>60/EW120 or EI<sub>2</sub>90/EW120 or EI<sub>2</sub>120

Water-tightness: npd\*

Resistance to windload: npd

Thermal resist: npd

Air permeability: npd

Dangerous subst.: approved

Mechanical strength: approved



\*No performance determined (npd)

## CONSTRUCTION AND SURFACES

---

**Door leaf:** The door leaf is 62 mm thick and made of 1 mm galvanized steel panels with insulation between them. The leaf is supplied divided in a number of sections that are screwed together at assembly. The door leaf is reinforced with a surrounding steel profile.

**Frame:** S88 is supplied with frame pieces made of galvanized steel plate. The frames are supplied adapted for screw mounting.

**Concealed rail system and counter weight closure:** The mounting system is depth and height adjustable. Ball bearing pulleys are integrated in the door leaf. The system is concealed by a cover. The door self-closes by gravity (counter weight). The counter weight is completely covered and protected by a guard. The self-closing speed is easily adjusted by the supplied hydraulic brake.

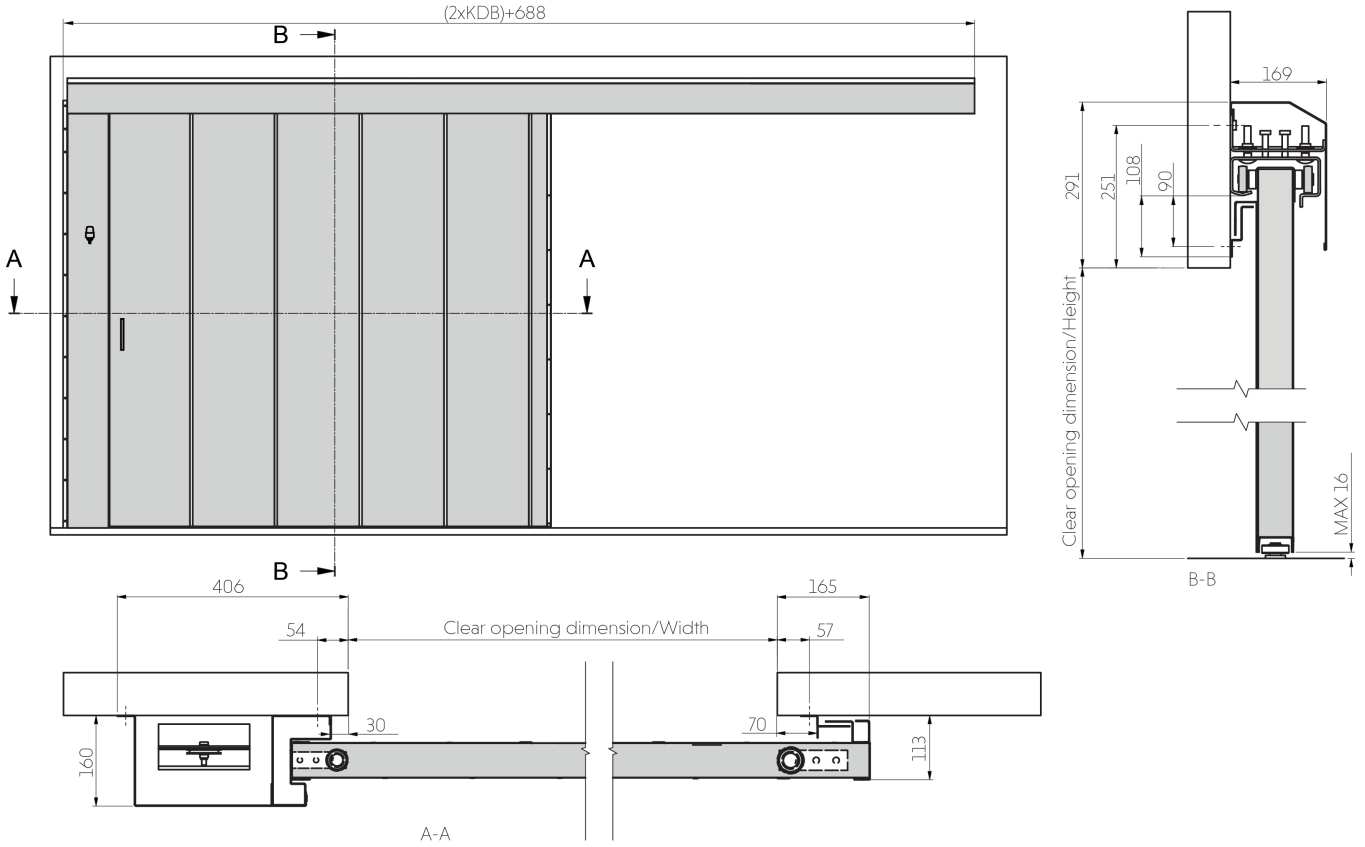
**Audio/visual signalling:** The audio/visual signaling is supplied complete with: electrical cabinet, installed battery backup, switches, sensors, warning lights and wiring.

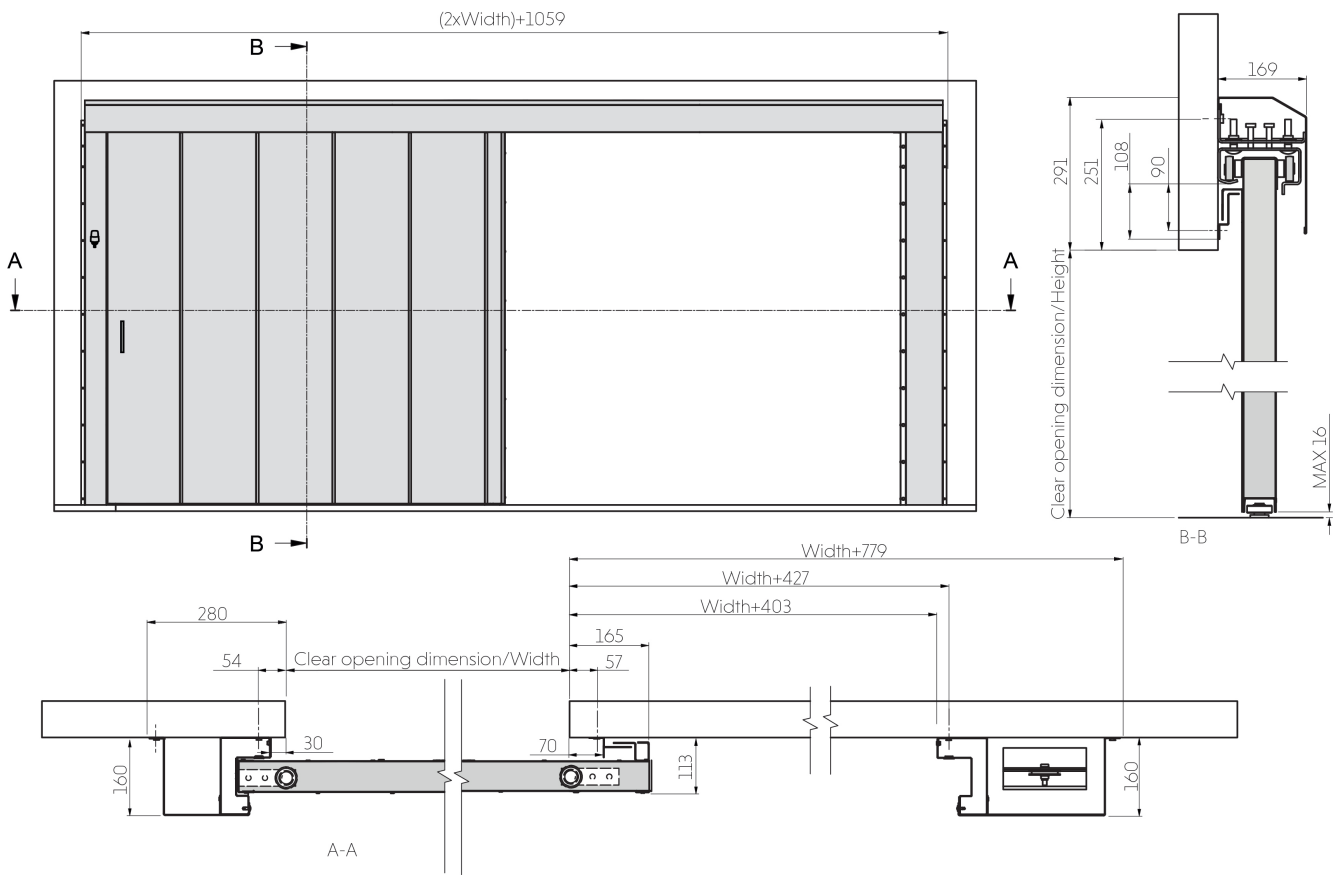
**Standard fittings:** Recessed pre-assembled pull handle, surface-mounted pull handle, floor guides and warning decals.

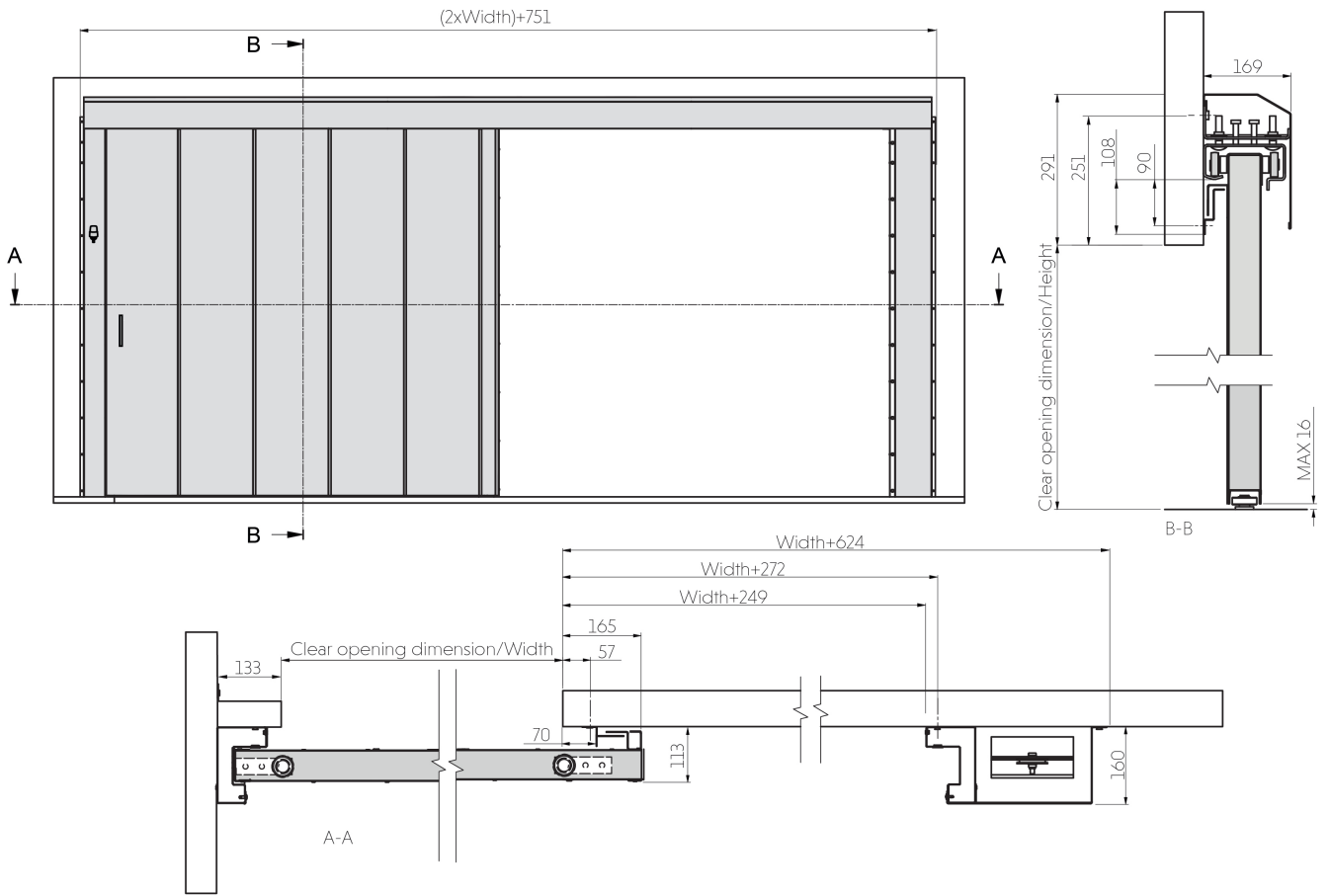
**Option:** Electric magnet, soft closing damper and smoke detector. S88 can be fitted with a built-in pass door. Fire class up to EI<sub>2</sub>90/EW120.

*We reserve the right to make modifications to the designs.*

**DETAIL SKETCHES**







**PICTURES**

---

