

Daloc T15/48 Swing door



Reference	Clear opening dimensions	Outer dimensions frame	Weight
Single door			
T15 8 x 21	700 x 2063	790 x 2093	49
T15 9 x 21	800 x 2063	890 x 2093	54
T15 10 x 21	900 x 2063	990 x 2093	59
T15 11 x 21	1000 x 2063	1090 x 2093	64
Double door			
T15 15 x 21	1400 x 2063	1490 x 2093	84
T15 18 x 21	1700 x 2063	1790 x 2093	98
Other module sizes and special sizes are available on request.			

Swing door Daloc T15 is intended for use as an inner door in areas with a lot of traffic, such as between kitchens and dining areas in restaurants. Wood doors in the Daloc range are equipped with protective edging around the whole door leaf, which both protects and makes it easier to keep them clean and are suitable for use in public areas.

CLASSIFICATIONS

Unrated

DOOR LEAF

Design: The door leaf is 48 mm thick and has a solid chipboard core with a tough wood surround. The design makes the door leaf durable and rigid as well as creating a pleasant closing feeling. Our selection of tough 38x66 mm wood surrounds also gives a strong screwed joint for mounting hinges etc which contributes to a longer service life.

Material: Core is manufactured from solid chipboard with surrounding wood frame.

Surface treatment: Laminate doors are clad with 4 mm wood fibre sheet with a surface coating of 0.7 mm thickness laminate sheet from our standard range. Ready painted doors are clad in 5 mm wood fibre sheet and supplied in white as standard. Veneered doors are clad in 4 mm wood fibre sheet with a surface coating of 0.6 mm knife cut veneer of sorted A-quality, available in oak, beech or birch. Other laminate surfaces or NCS colours are available on request.

EDGING

Laminate doors: Supplied as standard with protective edging of 3 mm beech patterned ABS-plastic on four edges. Alternatively, the doors are supplied with ABS-edging in other designs and colours or with solid wood edging.

Painted doors: Supplied with painted protective melamine edging on all edges.

Veneered doors: Supplied with veneered edging on all four edges in the same type of wood as the surface of the door leaf.

FRAME

Design: White painted pine frame 45x92 mm but available to order in frame dimensions 45x68, 45x98, 45x118, 45x122 and 45x145 mm or frame with choice of frame depths 68-250 mm.

Other: Other types of wood, NCS colours and surface treatments are available on request. T15 is available to order with a steel frame.



THRESHOLD

The swing doors are delivered without thresholds as standard but can be ordered with a threshold plate of oak or a plastic threshold.

STANDARD FITTINGS

Swing door T15 is supplied without lock, with double-action sprung hinges installed on the door leaf. The hinges are installed in the frame when the door is mounted and the spring tension must be adjusted after installation. It is important that the tension is the same on all hinges.

OPTIONAL COMPONENTS

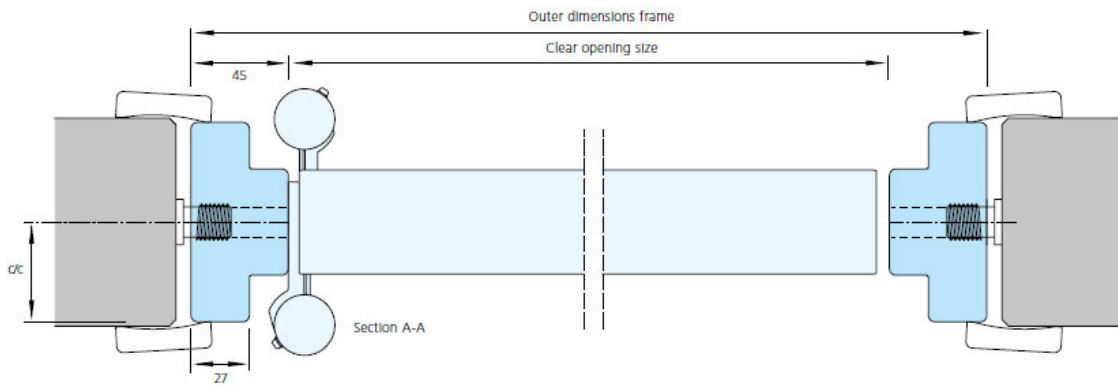
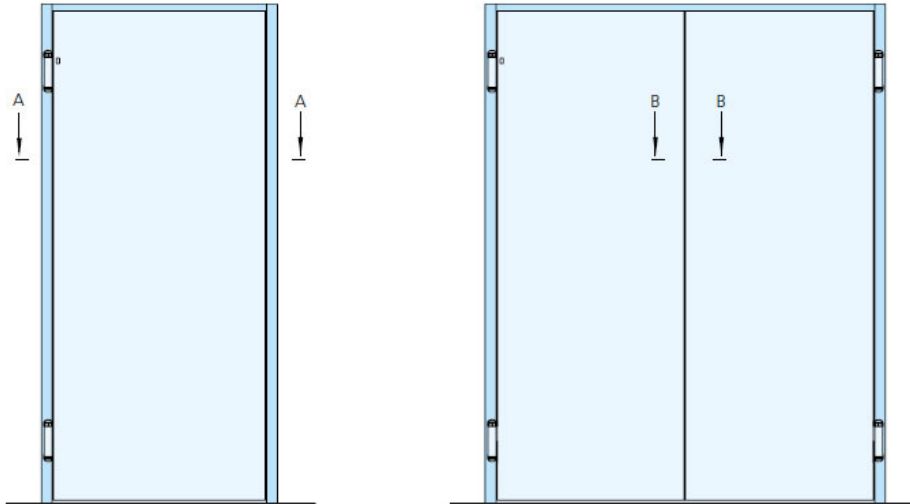
Can be supplied with Daloc Linea pattern, factory fitted frame sleeves, lock, vision panel, steel frame, kick plate, frame protection etc.

DOUBLE LEAF DOORS

The door leaves and frame are manufactured in the same way as the single leaf door. The door meeting for swing doors does not have an astragal, each door leaf operates separately.

We reserve the right to make modifications to the designs.

DETAIL SKETCHES



PICTURES



Protective edging around the whole door leaf that both protects and makes it easier to keep clean.



The spring tension on all hinges must be adjusted after installation.



Swing door T15 can be supplied with vision panel.

